



Human Living in Tropics

Tropical Environments and Human Living

Document of Symposium Organized by the Japan Society of Tropical Ecology, 1993 (Taniyama, Kagoshima)

Preface.....	1
Soils, People, and Sustainable Agriculture in Tropics / Potential of Sawah Based Agriculture in Tropical Africa. T. WAKATSUKI.....	3
Tubers and Millets — Relation between Crop and Environ- ment. S. SAKAMOTO.....	19
Genetic Erosion in the Tropics. Y. SATO.....	33
How do they prefer the diversity selections? — Cattle coat- color and sorghum variation —. K. FUKUI.....	51
Discussion.....	71

People's Lives and History in the South Pacific Region

Document of Symposium Organized by the Japan Society of Tropical Ecology and Kagoshima University Research Center for the South Pacific, 1993 (Taniyama, Kagoshima)

Subsistence Agriculture in Melanesia. K. NAKANO.....	79
Strategies of Prehistoric Human Settlement in Island Environment of Oceania. M. INTOH.....	87
Land as Society in an Atoll Environment. Y. KARAKITA... ..	109

第3巻 第1号
1994年1月

熱帯研究

日本熱帯生態学会

目次

1993年 日本熱帯生態学会でのシンポジウムの記録

総合シンポジウム「熱帯環境と人々の暮らし」

若月 利之 熱帯の土と人と持続的農業—熱帯アフリカの土と農業の再生と水田農業の可能性.....	3
阪本 寧男 イモと雑穀—作物と環境.....	19
佐藤洋一郎 熱帯における遺伝資源の喪失.....	33
福井 勝義 どのように多様化選択をおこなうか—ウシの毛色多型とモロコシの変異—.....	51
総合討論.....	71

公開シンポジウム「南太平洋地域の暮らしと歩み」

中野 和敬 メラネシアの自給農業.....	79
印東 道子 オセアニアの島嶼環境と人間居住.....	87
柄木田康之 島嶼での土地と人間社会.....	109

編集・発行 日本熱帯生態学会編集委員会 堀田満 (編集委員長)
鹿児島市郡元1丁目21-35 鹿児島大学理学部生物 (気付け)

Tel. 0992-85-8166 Fax 0992-85-8172

印刷 斯文堂株式会社 鹿児島市南栄3丁目1 Tel. 0992-68-8211

印刷・発行日 1994年1月15日印刷 1994年1月20日発行

TROPICS

熱帯研究

Published by
The Japan Society
of Tropical Ecology

The TROPICS is issued quarterly with one volume a year. It is open either to the results of original research, experimental or descriptive, or significant reviews of various aspects of tropical regions. The journal publishes papers in all aspects of ecology and/or other fields of science related to ecology. It aims not only to act as a valued means of communication between Japanese ecologists and other field scientists but also to stimulate the research activities of young ecologists/scientists of tropical nations especially in Southeast Asia. All the members of the society can contribute to TROPICS, and invited articles may be accepted at the request of editorial board. Special issues may be published on occasion by permission of editorial board, as monographs or reviews exceed approximately 100 pages in length.

Editor-in-Chief: Mitsuru HOTTA (Department of Biology, Faculty of Science, Kagoshima University)

Editorial Board

Takuya ABE (Kyoto University)	Yusho ARUGA (Tokyo University of Fisheries)
Akio FURUKAWA (National Institute for Environmental Studies)	Tamiji INOUE (Kyoto University)
Takashi KOHYAMA (Kyoto University)	Toshitaka IWAMOTO (Miyazaki University)
Narifumi MAEDA (Kyoto University)	Naoki KOYAMA (Kyoto University)
David W. ROUBIK (Smithsonian Tropical Research Institute)	Moritaka NISHIHARA (Tohoku University)
Takuo YAMAKURA* (Osaka City University)	Eizi SUZUKI* (Kagoshima University)
Tsuyoshi YONEDA* (Osaka Kyoiku University)	Isamu YAMADA (Kyoto University)
	Seiki YAMANE (Kagoshima University)
	* secretaries of editorial board

Instructions to authors Copy of manuscript, preferably in English (or Japanese), to be sent to the editors, typewritten on one side of paper, double-spaced, and with a wide margin. Underlinings to indicate letter types should be left to the editors. In addition to type-script copies, authors using word processing equipments are requested to submit a diskette or floppy disk with their text file. Preference is files in Microsoft Word for Macintosh, on double-sided 3.5 inch (DD, DS) diskettes. For texts processed on MS-DOS computers (preferably in Word Star or Word Perfect), please submit double-sided (DD, DS or HD) 5.25 inch or 3.5 inch floppy disks with the text saved as ASCII file.

The editors may ask the opinion of one or two reviewers before accepting or refusing the manuscript that has been submitted.

Summary. Each paper should be provided with a summary.

Citation of literature. In the text as follows: (Primack, 1991) or Ashton (1991). In the 'References' as follows:

Primack, R. B. & Hall P. 1991. Species diversity research in Bornean forests with implications for conservation biology and silviculture. *Tropics* 1: 91-111.

Jacobs, M. 1974. Botanical panorama of the Malesian archipelago. In UNESCO, *Natural Resources of Humid Tropical Asia*, 263-294. Paris.

Drawings in India ink, preferably not on transparent or tracing-paper, and photographs on glossy paper (white and black) or slides (color). Please indicate the place where figures should be inserted in the text. Magnification should be indicated by a scale line. In other cases the author should give the magnification as in the original.

Reprints. For articles with one author 50 copies free.

Manuscripts and correspondence concerning editorial matters should be addressed to **Editorial Office of the Japan Society of Tropical Ecology**, c/o Department of Biology, Faculty of Science, Kagoshima University, Korimoto 1-21-35, Kagoshima 890, Japan. Phone (0992) 85-8166 Fax 0992-85-8172

General Office of the Japan Society of Tropical Ecology addressed to c/o Faculty of Agriculture, Ehime University, Tarumi, 3-5-7, Matsuyama 790, Japan. Phone (0899) 41-4171 (283, 284) Fax (0899) 77-4364

[Cover] *Koompassia excelsa*, Kayu Rajah, the King of Malesian Rain Forest, Sabah, Borneo (M. Hotta).

日本熱帯生態学会 1993 年シンポジウムの記録

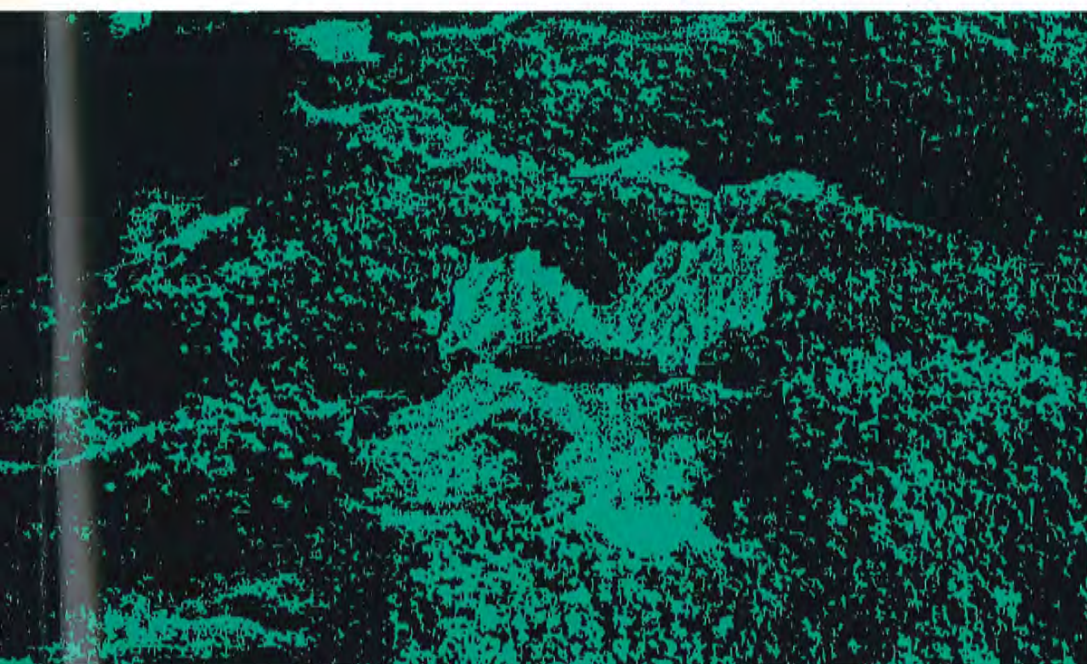
総合シンポジウム 「熱帯環境と人々の暮らし」

若月 利之	熱帯の土と人と持続的農業—熱帯アフリカの土と農業の再生と水田農業の可能性.....	3
阪本 寧男	イモと雑穀—作物と環境.....	19
佐藤洋一郎	熱帯における遺伝資源の喪失.....	33
福井 勝義	どのように多様化選択をおこなうか—ウシの毛色多型とモロコシの変異—.....	51
総合討論	71

公開シンポジウム 「南太平洋地域の暮らしと歩み」

(鹿児島大学南太平洋海域研究センターとの共催)

中野 和敬	メラネシアの自給農業.....	79
印東 道子	オセアニアの島嶼環境と人間居住.....	87
柄木田康之	島嶼での土地と人間社会.....	109



第3卷 第1号
別刷
1994年1月

熱帯研究

日本熱帯生態学会

Human Living in Tropics

Tropical Environments and Human Living

Document of Symposium Organized by the Japan Society of Tropical Ecology, 1993.

(Taniyama, Kagoshima)

Preface.....	1
Soils, People, and Sustainable Agriculture in Tropics / Potential of Sawah Based Agriculture in Tropical Africa. T. WAKATSUKI.....	3
Tubers and Millets — Relation between Crop and Environment. S. SAKAMOTO.....	19
Genetic Erosion in the Tropics. Y. SATO.....	33
How do they Prefer the Diversity Selections? — Cattle Coat-color and Sorghum Variation — K. FUKUI.....	51
Discussion.....	71

People's Lives and History in the South Pacific Region

Document of Symposium Organized by the Japan Society of Tropical Ecology and Kagoshima University Research Center for the South Pacific, 1993. (Taniyama, Kagoshima)

Subsistence Agriculture in Melanesia. K. NAKANO.....	79
Strategies of Prehistoric Human Settlement in Island Environment of Oceania. M. INTOH...	87
Land as Society in an Atoll Environment. Y. KARAKITA.....	109

編集・発行 日本熱帯生態学会編集委員会 堀田満 (編集委員長)
鹿児島市郡元1丁目21-35 鹿児島大学理学部生物 (気付け)

Tel. 0992-85-8166 Fax 0992-85-8172

印刷 斯文堂株式会社 鹿児島市南栄3丁目1 Tel. 0992-68-8211

印刷・発行日 1994年1月15日印刷 1994年1月20日発行

TROPICS

熱帯研究

Published by
The Japan Society
of Tropical Ecology

The TROPICS is issued quarterly with one volume a year. It is open either to the results of original research, experimental or descriptive, or significant reviews of various aspects of tropical regions. The journal publishes papers in all aspects of ecology and/or other fields of science related to ecology. It aims not only to act as a valued means of communication between Japanese ecologists and other field scientists but also to stimulate the research activities of young ecologists/scientists of tropical nations especially in Southeast Asia. All the members of the society can contribute to TROPICS, and invited articles may be accepted at the request of editorial board. Special issues may be published on occasion by permission of editorial board, as monographs or reviews exceed approximately 100 pages in length.

Editor-in-Chief: Mitsuru HOTTA (Department of Biology, Faculty of Science, Kagoshima University)

Editorial Board

Takuya ABE (Kyoto University)
Akio FURUKAWA (National Institute
for Environmental Studies)

Takashi KOHYAMA (Kyoto University)
Narifumi MAEDA (Kyoto University)

David W. ROUBIK (Smithsonian
Tropical Research Institute)

Takuo YAMAKURA* (Osaka City University)
Tsuyoshi YONEDA* (Osaka Kyoiku University)

Yusho ARUGA (Tokyo University of Fisheries)

Tamiji INOUE (Kyoto University)

Toshitaka IWAMOTO (Miyazaki University)

Naoki KOYAMA (Kyoto University)

Moritaka NISHIHARA (Tohoku University)

Eizi SUZUKI* (Kagoshima University)

Isamu YAMADA (Kyoto University)

Seiki YAMANE (Kagoshima University)

* secretaries of editorial board

Instructions to authors Copy of manuscript, preferably in English (or Japanese), to be sent to the editors, typewritten on one side of paper, double-spaced, and with a wide margin. Underlinings to indicate letter types should be left to the editors. In addition to type-script copies, authors using word processing equipments are requested to submit a diskette or floppy disk with their text file. Preference is files in Microsoft Word for Macintosh, on double-sided 3.5 inch (DD, DS) diskettes. For texts processed on MS-DOS computers (preferably in Word Star or Word Perfect), please submit double-sided (DD, DS or HD) 5.25 inch or 3.5 inch floppy disks with the text saved as ASCII file.

The editors may ask the opinion of one or two reviewers before accepting or refusing the manuscript that has been submitted.

Summary. Each paper should be provided with a summary.

Citation of literature. In the text as follows: (Primack, 1991) or Ashton (1991). In the 'References' as follows:

Primack, R. B. & Hall P. 1991. Species diversity research in Bornean forests with implications for conservation biology and silviculture. *Tropics* 1: 91-111.

Jacobs, M. 1974. Botanical panorama of the Malesian archipelago. In UNESCO, *Natural Resources of Humid Tropical Asia*, 263-294. Paris.

Drawings in India ink, preferably not on transparent or tracing-paper, and photographs on glossy paper (white and black) or slides (color). Please indicate the place where figures should be inserted in the text. Magnification should be indicated by a scale line. In other cases the author should give the magnification as in the original.

Reprints. For articles with one author 50 copies free.

Manuscripts and correspondence concerning editorial matters should be addressed to **Editorial Office of the Japan Society of Tropical Ecology**, c/o Department of Biology, Faculty of Science, Kagoshima University, Korimoto 1-21-35, Kagoshima 890, Japan. Phone (0992) 85-8166 Fax 0992-85-8172

General Office of the Japan Society of Tropical Ecology addressed to c/o Faculty of Agriculture, Ehime University, Tarumi, 3-5-7, Matsuyama 790, Japan. Phone (0899) 41-4171 (283, 284) Fax (0899) 77-4364

[表紙] 熱帯多雨林の中に拓かれた焼畑, Sabah, Borneo (M. Hotta).



- Reproductive Isolation in Four Phytophagous Ladybeetles (*Epilachna*, Coccinellidae, Coleoptera) in West Sumatra. S. NAKANO & I. ABBAS. 121
- Parasitoids of the Banana Skipper *Erionota thrax* (L.) in Sumatera Barat, Indonesia, with Notes on their Life History, Distribution and Abundance. A. HASYIM, N. HASAN, SYAFRIL, HERLION & K. NAKAMURA 131
- Nitrogen Distribution in Vegetation of a Subtropical Monsoon Evergreen Broadleaf Forest in China. J. MO, S. BROWN, M. DING & Z. ZHANG. 143
- Field note : Ethnobotanical Uses and Loss of Knowledge Concerning Forest Trees among some Iban in Sarawak. J. JARVIE & B. PERUMAL. 155
- Short communication: Population Structure of a Monophagous Chrysomelid Beetle in a Mexican Lowland Rain Forest. K. OYAMA & R. DIRZO. 163
- The Influence of Modernization upon Traditional Societies: A Study of the Bajaus in the Sulu Archipelago. K. NAGATSU. 169

第3巻 第2号
1994年1月

熱帯研究

日本熱帯生態学会

目次

中野 進, I. ABBAS 西スマトラの4種の食植性テントウムシ (マダラテントウ属、テントウムシ科, 甲虫目) の生殖的隔離.....	121
A. HASYIM, N. HASAN, SYAFRIL, HERLION, 中村浩二 インドネシア共和国スマトラ西部州におけるバナナセセリ <i>Erionota thrax</i> (L.) (鱗翅目): セセリチョウ科) の寄生性昆虫の種類相, 生活史, 分布, 生息密度.....	131
J. MO, S. BROWN, M. DING, Z. ZHANG 中国大陸の亜熱帯常緑広葉季節林植生での窒素の分布.....	143
J. JARVIE, B. PERUMAL (Field Note) サラワクのイバン族における森林樹木種の利用とその知識の喪失.....	155
K. OYAMA, R. DIRZO (Short Communication) メキシコ低地降雨林における単食生ハムシ科甲虫の集団構造.....	163
長津一史 スルー諸島における近代化と社会変容—漂海民バジャウの定住化をめぐる—.....	169

編集・発行 日本熱帯生態学会編集委員会 堀田満 (編集委員長)
鹿児島市郡元1丁目21-35 鹿児島大学理学部生物 (気付け)
Tel. 0992-85-8166 Fax 0992-85-8172
印刷 斯文堂株式会社 鹿児島市南栄3丁目1 Tel. 0992-68-8211
印刷・発行日 1994年1月20日印刷 1994年1月25日発行

TROPICS

熱帯研究

Published by
The Japan Society
of Tropical Ecology

The TROPICS is issued quarterly with one volume a year. It is open either to the results of original research, experimental or descriptive, or significant reviews of various aspects of tropical regions. The journal publishes papers in all aspects of ecology and/or other fields of science related to ecology. It aims not only to act as a valued means of communication between Japanese ecologists and other field scientists but also to stimulate the research activities of young ecologists/scientists of tropical nations especially in Southeast Asia. All the members of the society can contribute to TROPICS, and invited articles may be accepted at the request of editorial board. Special issues may be published on occasion by permission of editorial board, as monographs or reviews exceed approximately 100 pages in length.

Editor-in-Chief: Mitsuru HOTTA (Department of Biology, Faculty of Science, Kagoshima University)

Editorial Board

Takuya ABE (Kyoto University)
Akio FURUKAWA (National Institute
for Environmental Studies)
Takashi KOHYAMA (Kyoto University)
Narifumi MAEDA (Kyoto University)
David W. ROUBIK (Smithsonian
Tropical Research Institute)
Takuo YAMAKURA* (Osaka City University)
Tsuyoshi YONEDA* (Osaka Kyoiku University)

Yusho ARUGA (Tokyo University of Fisheries)
Tamiji INOUE (Kyoto University)
Toshitaka IWAMOTO (Miyazaki University)
Naoki KOYAMA (Kyoto University)
Moritaka NISHIHARA (Tohoku University)
Eizi SUZUKI* (Kagoshima University)
Isamu YAMADA (Kyoto University)
Seiki YAMANE (Kagoshima University)
* secretaries of editorial board

Instructions to authors Copy of manuscript, preferably in English (or Japanese), to be sent to the editors, typewritten on one side of paper, double-spaced, and with a wide margin. Underlinings to indicate letter types should be left to the editors. In addition to type-script copies, authors using word processing equipments are requested to submit a diskette or floppy disk with their text file. Preference is files in Microsoft Word for Macintosh, on double-sided 3.5 inch (DD, DS) diskettes. For texts processed on MS-DOS computers (preferably in Word Star or Word Perfect), please submit double-sided (DD, DS or HD) 5.25 inch or 3.5 inch floppy disks with the text saved as ASCII file.

The editors may ask the opinion of one or two reviewers before accepting or refusing the manuscript that has been submitted.

Summary. Each paper should be provided with a summary.

Citation of literature. In the text as follows: (Primack, 1991) or Ashton (1991). In the 'References' as follows:

Primack, R. B. & Hall P. 1991. Species diversity research in Bornean forests with implications for conservation biology and silviculture. *Tropics* 1: 91-111.

Jacobs, M. 1974. Botanical panorama of the Malesian archipelago. In UNESCO, *Natural Resources of Humid Tropical Asia*, 263-294. Paris.

Drawings in India ink, preferably not on transparent or tracing-paper, and photographs on glossy paper (white and black) or slides (color). Please indicate the place where figures should be inserted in the text. Magnification should be indicated by a scale line. In other cases the author should give the magnification as in the original.

Reprints. For articles with one author 50 copies free.

Manuscripts and correspondence concerning editorial matters should be addressed to **Editorial Office of the Japan Society of Tropical Ecology**, c/o Department of Biology, Faculty of Science, Kagoshima University, Korimoto 1-21-35, Kagoshima 890, Japan. Phone (0992) 85-8166 Fax 0992-85-8172

General Office of the Japan Society of Tropical Ecology addressed to c/o Faculty of Agriculture, Ehime University, Tarumi, 3-5-7, Matsuyama 790, Japan. Phone (0899) 41-4171 (283, 284) Fax (0899) 77-4364

[Cover] *Koompasia excelsa*, Kayu Rajah, the King of Malesian Rain Forest, Sabah, Borneo (M. Hotta).



Ecological-Genetic Studies on Wild and Cultivated Rice in Tropical Asia (4th survey) Edited by Y. I. SATO. . . . 189-245

Preface	Y. I. SATO.	191
1. Geographical Distribution of the Natural Populations of <i>Oryza rufipogon</i> in Asia.	Y. I. SATO.	195
2. Wild Rice in the Middle Basin of Mekong River.		
H. YAMAGISHI		199
3. Observations on Cultivated Rice in Laos.	T. SATO.	205
4. Rice in the Mekong Delta.	H. MORISHIMA.	211
5. Observations on Wild and Cultivated Rice in Cambodia.		
Y. I. SATO.		217
6. Wild Rice in the Malay Peninsula.	Y. SHIMAMOTO.	221
7. Genetic Erosion of Rice in Thailand.	S. CHITRAKON.	223
8. Observations at Permanent Study-Sites of Wild Rice in the Suburb of Bangkok.	H. MORISHIMA.	227
9. A Report for an Additional Trip in Laos made in 1993.		
Y. I. SATO.		235
Appendix 1. Abstract of Diary.		238
Appendix 2-1, 2 Maps.		240
Appendix 3. Persons and Institutions to be Acknowledged.		242
Appendix 4 List of collection sites in Laos, Vietnam, Cambodia, Malaysia and Thailand.		243

Floral Lists from Five Study Sites of Apes in the African Tropical Forests Edited by M. MITANI, S. KURODA and C. E. G. TUTIN. 247-346

Preface.		247
List of Plant Species Identified in the Northern Part of the Lopé Reserve, Gabon.	C. E. G. TUTIN, L. J. T. WHITE, E. A. WILLIAMSON, M. FERNANDEZ & G. MCPHERSON.	249
Vegetation and List of Plant Species Identified in the Nouabalé-Ndoki Forest, Congo.	J.-M. MOUTSAMBOTÉ, T. YUMOTO, M. MITANI, T. NISHIHARA, S. SUZUKI & S. KURODA.	277
List of Plant Species Identified in Kahuzi-Biega National Park, Zaire.	T. YUMOTO, J. YAMAGIWA, N. MWANZA & T. MARUHASHI.	295
Flora and Vegetation of Wamba Forest, Central Zaire with Reference to Bonobo (<i>Pan paniscus</i>) Foods.	G. IDANI, S. KURODA, T. KANO & R. ASATO.	309
Plants of the Tongwe East Forest Reserve (Ugalla), Tanzania.	J. MOORE.	333

日本熱帯生態学会

目次

佐藤洋一郎 (編) 熱帯アジアにおける稲遺伝資源の生態遺伝学的研究 (第4次) 189-245

序文.....191

1. 野生稲 (*Oryza rufipogon*) のアジアにおける地理的分布 (佐藤洋一郎)195

2. メコン川中流域における野生稲 (山岸博)199

3. ラオスの栽培稲 (佐藤雅志) ...
.....205

4. メコンデルタの稲 (森島啓子)211

5. カンボディアの野生稲と栽培稲 (佐藤洋一郎)217

6. マレー半島の野生稲 (島本義也)221

7. タイにおける稲遺伝資源の喪失 (ソクラン・チトラコン)223

8. バンコク付近の固定調査地点での野生稲の継続調査 (森島啓子)227

9. ラオスでの補足調査 (佐藤洋一郎)235

資料 1. 調査日程 2. 地図 3. 謝辞 4. 調査地点一覧238

三谷雅純, 黒田末寿, Caroline E. G. TUTIN (編) アフリカ熱帯林の5つの類人猿調査地の植物
リスト.....247-340

C. E. G. TUTIN, L. J. T. WHITE, E. A. WILLIAMSON, M. FERNANDEZ, G. MCPHERSON..... ガボ
ン・ロベ保護地域の同定された植物リスト.....249

J.-M. MOUTSAMBOTÉ, 湯本貴和, 三谷雅純, 西原智昭, 鈴木滋, 黒田末寿 コンゴ国ヌアバレーン
ドキの森の植生と同定した植物リスト.....277

湯本貴和, 山極寿一, N. MWANZA, 丸橋珠樹 ザイール国カフジ・ピエガ国立公園で得られて
同定された植物のリスト.....295

伊谷原一, 黒田末寿, 加納隆至, 安里龍 ボノボの食物に関連したザイール, ワンバ森林の植物
相と植生.....309

J. MOORE タンザニア国トングウェ東森林保護区 (ウガラ地域) の植物 333

編集・発行 日本熱帯生態学会編集委員会 堀田満 (編集委員長)
鹿児島市郡元1丁目21-35 鹿児島大学理学部生物 (気付け)

Tel. 0992-85-8166 Fax 0992-85-8172

印刷 斯文堂株式会社 鹿児島市南栄3丁目1 Tel. 0992-68-8211

印刷・発行日 1994年3月25日印刷 1994年3月31日発行

TROPICS

熱帶研究

Published by
The Japan Society
of Tropical Ecology

The TROPICS is issued quarterly with one volume a year. It is open either to the results of original research, experimental or descriptive, or significant reviews of various aspects of tropical regions. The journal publishes papers in all aspects of ecology and/or other fields of science related to ecology. It aims not only to act as a valued means of communication between Japanese ecologists and other field scientists but also to stimulate the research activities of young ecologists/scientists of tropical nations especially in Southeast Asia. All the members of the society can contribute to TROPICS, and invited articles may be accepted at the request of editorial board. Special issues may be published on occasion by permission of editorial board, as monographs or reviews exceed approximately 100 pages in length.

Editor-in-Chief: Mitsuru Hotta (Department of Biology, Faculty of Science, Kagoshima University)

Editorial Board

Takuya ABE (Kyoto University)
Akio FURUKAWA (National Institute
for Environmental Studies)
Takashi KOHYAMA (Kyoto University)
Narifumi MAEDA (Kyoto University)
David W. ROUBIK (Smithsonian
Tropical Research Institute)
Takuo YAMAKURA* (Osaka City University)
Tsuyoshi YONEDA* (Osaka Kyoiku University)

Yusho ARUGA (Tokyo University of Fisheries)
Tamiji INOUE (Kyoto University)
Toshitaka IWAMOTO (Miyazaki University)
Naoki KOYAMA (Kyoto University)
Moritaka NISHIHARA (Tohoku University)
Eizi SUZUKI* (Kagoshima University)
Isamu YAMADA (Kyoto University)
Seiki YAMANE (Kagoshima University)
* secretaries of editorial board

Instructions to authors Copy of manuscript, preferably in English (or Japanese), to be sent to the editors, typewritten on one side of paper, double-spaced, and with a wide margin. Underlinings to indicate letter types should be left to the editors. In addition to type-script copies, authors using word processing equipments are requested to submit a diskette or floppy disk with their text file. Preference is files in Microsoft Word for Macintosh, on double-sided 3.5 inch (DD, DS) diskettes. For texts processed on MS-DOS computers (preferably in Word Star or Word Perfect), please submit double-sided (DD, DS or HD) 5.25 inch or 3.5 inch floppy disks with the text saved as ASCII file.

The editors may ask the opinion of one or two reviewers before accepting or refusing the manuscript that has been submitted.

Summary. Each paper should be provided with a summary.

Citation of literature. In the text as follows: (Primack, 1991) or Ashton (1991). In the 'References' as follows:

Primack, R. B. & Hall P. 1991. Species diversity research in Bornean forests with implications for conservation biology and silviculture. *Tropics* 1: 91-111.

Jacobs, M. 1974. Botanical panorama of the Malesian archipelago. In UNESCO, *Natural Resources of Humid Tropical Asia*, 263-294. Paris.

Drawings in India ink, preferably not on transparent or tracing-paper, and photographs on glossy paper (white and black) or slides (color). Please indicate the place where figures should be inserted in the text. Magnification should be indicated by a scale line. In other cases the author should give the magnification as in the original.

Reprints. For articles with one author 50 copies free.

Manuscripts and correspondence concerning editorial matters should be addressed to **Editorial Office of the Japan Society of Tropical Ecology**, c/o Department of Biology, Faculty of Science, Kagoshima University, Korimoto 1-21-35, Kagoshima 890, Japan. Phone (0992) 85-8166 Fax 0992-85-8172

General Office of the Japan Society of Tropical Ecology addressed to c/o Faculty of Agriculture, Ehime University, Tarumi, 3-5-7, Matsuyama 790, Japan. Phone (0899) 41-4171 (283, 284) Fax (0899) 77-4364

[Cover] *Koompassia excelsa*, Kayu Rajah, the King of Malesian Rain Forest, Sabah, Borneo (M. Hotta).