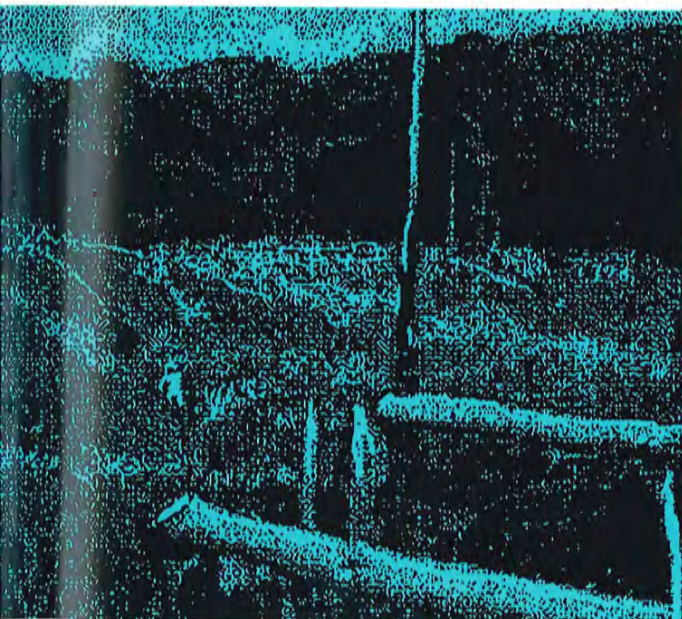


## 熱帯におけるバイオダイバーシティの諸問題

1992年 第2回日本熱帯生態学会シンポジウムの記録

加藤雅啓	熱帯多雨林はなぜ種の多様性が高いか—分類学の立場.....	69
山田 勇	東南アジア熱帯多雨林生態系とヒト.....	79
大塚柳太郎	ニューギニア低地におけるミクロな環境変動とヒトの適応機構....	97
市川光雄	アフリカ狩猟採集民の森林利用における多様性と多重性.....	107
	総合討論.....	123



ブナン族の焼き畑, Ulu Anap, 4th division, Sarawak

第2卷 第2号  
別刷  
1992年 11月

# 熱帯研究

日本熱帯生態学会

## Biodiversity; Vital Problems of Tropical Nature and Human Beings

Document of a Symposium Organized by the Japan Society of  
Tropical Ecology, Makuhari, Chiba, 1992 (in Japanese)

Why are Tropical Rain Forests Species-Rich? A View from Systematics. M. KATO .....	.69
Ecosystem and People in Southeast Asian Tropical Rain Forest. I. YAMADA .....	.79
Microenvironmental Diversity and Human Adaptation in Lowland New Guinea. Y. OHTSUKA .....	.97
Diversity and Multiplicity in the Forest Use by the African Hunter-Gatherers. M. ICHIKAWA .....	.107
Discussion .....	.123

---

編集・発行 日本熱帯生態学会編集委員会 堀田満 (編集委員長)  
鹿児島市郡元1丁目21-35 鹿児島大学理学部生物 (気付け)  
Tel. 0992-54-7141(4370) Fax 0992-54-7448

印刷 斯文堂株式会社 鹿児島市南栄3丁目1 Tel. 0992-68-8211

印刷・発行日 1992年11月15日印刷 1992年11月20日発行

# 日本熱帯生態学会 The Japan Society of Tropical Ecology

日本熱帯生態学会は熱帯地域の生態学的研究の進歩と研究成果の交流と普及に努めます。熱帯地域の生態学的研究といっても、熱帯生態学という確立した学問分野があるわけではありません。それぞれの研究者がそれぞれの研究方法によって熱帯地域の理解を深めていけばいいのですが、熱帯地域の自然に対する開発のすすみかたを考えると、熱帯地域の自然と人間生活をどのようにして持続的なものとして維持し発展させるかという視点が重要になってくることはさげられません。生物過程が主体となった自然生態系に注目するだけでなく、自然を組織している社会的なしくみにも目をつぶってはならないでしょう。このような意味でこれからの熱帯研究はより広い視野をもとめられるにちがいありません。幅の広いさまざまな研究の成果の相互交流が重要です。さらに研究成果は学界が独占すべきものではありません。広く社会に還元し、熱帯地域に生じている社会と自然をめぐる諸問題が正しく理解され、解決されるよう努力する必要があります。

## 学会組織 (1992-93)

会 長 吉良竜夫 滋賀県琵琶湖研究所所長

評議員 安部琢哉(京都大学), 井上民二(京都大学), 岩坪五郎(京都大学), 小川房人(元大阪市大), 荻野和彦(愛媛大学), 小野勇一(九州大), 川那部浩哉(京都大), 久間一剛(京都大), 高谷好一(京都大), 佐々木高明(民族学博), 田川日出夫(鹿児島大), 田中二郎(京都大), 堀田満(鹿児島大), 宮脇昭(横浜国大), 安野正之(環境研), 山倉拓夫(大阪市大), 山田勇(京都大), 依田恭二(大阪市大), 渡辺弘之(京都大)

監 事 小川房人(元大阪市大), 久野英二(京都大)

幹事長 荻野和彦(愛媛大)

幹 事 岩坪五郎(京都大), 渡辺弘之(京都大), 山田勇(京都大), 井上民二(京都大), 遅沢克也(愛媛大), 中村浩二(金沢大), 二宮生夫(愛媛大), 山倉拓夫(元大阪市大), 米田健(大阪教育大)

学会事務局 〒790 松山市榎見3-5-7 愛媛大学農学部森林生態学・造林学研究室内 日本熱帯生態学会事務局  
Phone 0899-41-4171 (283,284), Fax 0899-77-4364

### 編集委員会

委員長 堀田満(鹿児島大)

編集委員 安部琢哉(京都大), 有賀祐勝(水産大), 古川 昭雄(環境研), 井上民二(京都大), 岩本俊孝(宮崎大), 甲山隆司(京都大), 小山直樹(京都大), 前田成文(京都大), 西平守孝(東北大), D. W. Roubik (Smithsonian Tropical Research Institute), 鈴木英二(鹿児島大), 山倉拓夫(大阪市大), 山田勇(京都大), 山根正気(鹿児島大), 米田健(大阪教育大)

編集委員会事務局 〒890 鹿児島市郡元1-24-35 鹿児島大学理学部生物(内) Phone 0992-54-7141 (4370)  
Fax 0992-54-7448

入会手続き, 学会誌バックナンバーの入手など学会事務に関する連絡は学会事務局に, またTROPICSに対する論文の投稿などの編集に関わる連絡は編集事務局にご連絡ください。ただしニュースレターについては Letter 担当の〒582 柏原市旭ヶ丘4-698-1 大阪教育大学教養学科 米田健宛てでお願いいたします。



## CONTENTS

- Regeneration Process of a Climax Species *Calophyllum* cf. *soulattri* in Tropical Rain Forest of West Sumatra. Erizal MUKHTAR, Eizi SUZUKI, Takashi KOHYAMA and Marlis RAHMAN..... 1
- Root Development of *Rhizophora apiculata* Seedlings Under Extremely Low Oxygen Concentration of the Soils. Vipak JINTANA, Ikuo NINOMIYA and Kazuhiko OGINO..... 13
- Population Structure of the Dominant Palm Species in the Understory of a Mexican Lowland Rain Forest. Ken OYAMA, Rodolfo DIRZO and Guillermo IBARRA-MANRIQUEZ..... 23
- Initiation of Mass Emergence of a Tropical Chaoborid, *Chaoborus (Edwardsops) magnificus* (Insecta, Diptera), at New Moon. Haruo FUKUHARA, Gerald Eustáquio TORRES and Sonia Maria CLARO MONTEIRO..... 29
- Fishing Household Economy in Rural Indonesia: A Case of Kematiga Fishing Village, North Sulawesi. Oddy A. MANUS, Eddy MANTJORO, Yoshito JINNOUCHI and Yukio SHIGEMI..... 35
- Phytosociological Studies on Tropical Peat Swamps. 1. Classification of Vegetation at Narathiwat, Thailand. Kunio SUZUKI and Chawalit NIYOMDHAM..... 49

第2巻 第1号  
1992年8月

# 熱帯研究

日本熱帯生態学会

## 目次

- E. MUKHTAR, 鈴木英治, 甲山隆司, M. RAHMAN 西スマトラ州の熱帯多雨林における極相種の *Calophyllum cf. soulattri* の更新過程.....1
- V. JINTANA, 二宮生夫, 荻野和彦 土壤中の極端な低酸素濃度における *Rhizophora apiculata* 実生苗の根系発達.....13
- K. OYAMA, R. DIRZO, G. IBARRA-MANRIQUEZ メキシコ低地多雨林内の優占的なヤシ類の集団構造.....23
- 福原晴夫, G. E. TORRES & S. M. CLARO MONTEIRO 熱帯産フサカ *Chaoborus (Edwardsops) magnificus* の新月羽化.....29
- O. A. MANUS, E. MANTJORO, 陣内義人, 重見之雄 インドネシアの地方における漁業家庭経済：北スラウェシ州ケマティガ村の一例.....35
- 鈴木邦雄, C. NIYOMDHAM 熱帯泥炭湿地の植物社会学的研究 1. タイ国ナラチワ地区の植生区分.....49

---

編集・発行 日本熱帯生態学会編集委員会 堀田満 (編集委員長)  
鹿児島市郡元1丁目21-35 鹿児島大学理学部生物 (気付)  
Tel. 0992-54-7141(4370)

印刷 斯文堂株式会社 鹿児島市南栄3丁目1 Tel. 0992-68-8211

印刷・発行日 1992年8月20日印刷 1992年8月25日発行

# TROPICS

## 熱帯研究

Published by  
The Japan Society  
of Tropical Ecology

The TROPICS is issued quarterly with one volume a year. It is open either to the results of original research, experimental or descriptive, or significant reviews of various aspects of tropical regions. The journal publishes papers in all aspects of ecology and/or other fields of science related to ecology. It aims not only to act as a valued means of communication between Japanese ecologists and other field scientists but also to stimulate the research activities of young ecologists/scientists of tropical nations especially in Southeast Asia. All the members of the society can contribute to TROPICS, and invited articles may be accepted at the request of editorial board. Special issues may be published on occasion by permission of editorial board, as monographs or reviews exceed approximately 100 pages in length.

Editor-in-Chief: Mitsuru HOTTA (Department of Biology, Faculty of Science, Kagoshima University)

### Editorial Board

Takuya ABE (Kyoto University)  
Akio FURUKAWA (National Institute  
for Environmental Studies)

Takashi KOHYAMA (Kyoto University)  
Narifumi MAEDA (Kyoto University)  
David W. ROUBIK (Smithsonian  
Tropical Research Institute)

Takuo YAMAKURA\* (Osaka City University)  
Tsuayoshi YONEDA\* (Osaka Kyoiku University)

Yusho ARUGA (Tokyo University of Fisheries)

Tamiji INOUE (Kyoto University)

Toshitaka IWAMOTO (Miyazaki University)

Naoki KOYAMA (Kyoto University)

Moritaka NISHIHARA (Tohoku University)

Eizi SUZUKI\* (Kagoshima University)

Isamu YAMADA (Kyoto University)

Seiki YAMANE (Kagoshima University)

\* secretaries of editorial board

**Instructions to authors** Copy of manuscript, preferably in English (or Japanese), to be sent to the editors, typewritten on one side of paper, double-spaced, and with a wide margin. Underlinings to indicate letter types should be left to the editors. In addition to type-script copies, authors using word processing equipments are requested to submit a diskette or floppy disk with their text file. Preference is files in Microsoft Word for Macintosh, on double-sided 3.5 inch (DD, DS) diskettes. For texts processed on MS-DOS computers (preferably in Word Star or Word Perfect), please submit double-sided (DD, DS or HD) 5.25 inch or 3.5 inch floppy disks with the text saved as ASCII file.

The editors may ask the opinion of one or two reviewers before accepting or refusing the manuscript that has been submitted.

**Summary.** Each paper should be provided with a summary.

**Citation of literature.** In the text as follows: (Primack, 1991) or Ashton (1991). In the 'References' as follows:

Primack, R. B. & Hall P. 1991. Species diversity research in Bornean forests with implications for conservation biology and silviculture. *Tropics* 1: 91-111.

Jacobs, M. 1974. Botanical panorama of the Malesian archipelago. In UNESCO, *Natural Resources of Humid Tropical Asia*, 263-294. Paris.

**Drawings** in India ink, preferably not on transparent or tracing-paper, and photographs on glossy paper (white and black) or slides (color). Please indicate the place where figures should be inserted in the text. Magnification should be indicated by a scale line. In other cases the author should give the magnification as in the original.

**Reprints.** For articles with one author 50 copies free.

**Manuscripts and correspondence** concerning editorial matters should be addressed to Editorial Office of the Japan Society of Tropical Ecology, c/o Department of Biology, Faculty of Science, Kagoshima University, Korimoto 1-21-35, Kagoshima 890, Japan.

[Cover] *Swintonia schwenkii*, the largest tree in Pinang Pinang plot, West Sumatra (M. Hotta).



## CONTENTS

- A Symposium on Biodiversity; Vital Problems of Tropical Nature and Human Beings (in Japanese) . . . . 67**
- Why are Tropical Rain Forests Species-Rich? A View from Systematics. M. KATO . . . . . 69
- Ecosystem and People in Southeast Asian Tropical Rain Forest. I. YAMADA . . . . . 79
- Microenvironmental Diversity and Human Adaptation in Lowland New Guinea. R. OHTSUKA . . . . . 97
- Diversity and Multiplicity in the Forest Use by the African Hunter-Gatherers. M. ICHIKAWA . . . . . 107
- Discussion. . . . . 123

第2巻 第2号  
1992年11月

# 熱帯研究

日本熱帯生態学会

## 目次

### 第2回日本熱帯生態学会シンポジウムの記録 熱帯におけるバイオダイバーシティの諸問題

加藤雅啓	熱帯多雨林はなぜ種の多様性が高いか—分類学の立場.....	69
山田 勇	東南アジア熱帯多雨林生態系とヒト.....	79
大塚柳太郎	ニューギニア低地におけるミクロな環境変動とヒトの適応機構.....	97
市川光雄	アフリカ狩猟採集民の森林利用における多様性と多重性.....	107
	総合討論.....	123

---

編集・発行 日本熱帯生態学会編集委員会 堀田満 (編集委員長)  
鹿児島市郡元1丁目21-35 鹿児島大学理学部生物 (気付け)  
Tel. 0992-54-7141(4370) Fax 0992-54-7448

印刷 斯文堂株式会社 鹿児島市南栄3丁目1 Tel. 0992-68-8211

印刷・発行日 1992年11月15日印刷 1992年11月20日発行



# TROPICS

## 熱帯研究

Published by  
The Japan Society  
of Tropical Ecology

The TROPICS is issued quarterly with one volume a year. It is open either to the results of original research, experimental or descriptive, or significant reviews of various aspects of tropical regions. The journal publishes papers in all aspects of ecology and/or other fields of science related to ecology. It aims not only to act as a valued means of communication between Japanese ecologists and other field scientists but also to stimulate the research activities of young ecologists/scientists of tropical nations especially in Southeast Asia. All the members of the society can contribute to TROPICS, and invited articles may be accepted at the request of editorial board. Special issues may be published on occasion by permission of editorial board, as monographs or reviews exceed approximately 100 pages in length.

Editor-in-Chief: Mitsuru HOTTA (Department of Biology, Faculty of Science, Kagoshima University)

### Editorial Board

Takuya ABE (Kyoto University)

Akio FURUKAWA (National Institute  
for Environmental Studies)

Takashi KOHYAMA (Kyoto University)

Narifumi MAEDA (Kyoto University)

David W. ROUBIK (Smithsonian  
Tropical Research Institute)

Takuo YAMAKURA\* (Osaka City University)

Tsuyoshi YONEDA\* (Osaka Kyoiku University)

Yusho ARUGA (Tokyo University of Fisheries)

Tamiji INOUE (Kyoto University)

Toshitaka IWAMOTO (Miyazaki University)

Naoki KOYAMA (Kyoto University)

Moritaka NISHIHIRA (Tohoku University)

Eizi SUZUKI\* (Kagoshima University)

Isamu YAMADA (Kyoto University)

Seiki YAMANE (Kagoshima University)

\* secretaries of editorial board

**Instructions to authors** Copy of manuscript, preferably in English (or Japanese), to be sent to the editors, typewritten on one side of paper, double-spaced, and with a wide margin. Underlinings to indicate letter types should be left to the editors. In addition to type-script copies, authors using word processing equipments are requested to submit a diskette or floppy disk with their text file. Preference is files in Microsoft Word for Macintosh, on double-sided 3.5 inch (DD, DS) diskettes. For texts processed on MS-DOS computers (preferably in Word Star or Word Perfect), please submit double-sided (DD, DS or HD) 5.25 inch or 3.5 inch floppy disks with the text saved as ASCII file.

The editors may ask the opinion of one or two reviewers before accepting or refusing the manuscript that has been submitted.

**Summary.** Each paper should be provided with a summary.

**Citation of literature.** In the text as follows: (Primack, 1991) or Ashton (1991). In the 'References' as follows:

Primack, R. B. & Hall P. 1991. Species diversity research in Bornean forests with implications for conservation biology and silviculture. *Tropics* 1: 91-111.

Jacobs, M. 1974. Botanical panorama of the Malesian archipelago. In UNESCO, *Natural Resources of Humid Tropical Asia*, 263-294. Paris.

**Drawings** in India ink, preferably not on transparent or tracing-paper, and photographs on glossy paper (white and black) or slides (color). Please indicate the place where figures should be inserted in the text. Magnification should be indicated by a scale line. In other cases the author should give the magnification as in the original.

**Reprints.** For articles with one author 50 copies free.

Manuscripts and correspondence concerning editorial matters should be addressed to **Editorial Office of the Japan Society of Tropical Ecology**, c/o Department of Biology, Faculty of Science, Kagoshima University, Korimoto 1-21-35, Kagoshima 890, Japan. Phone (0992) 54-7141 (4370) Fax 0992-54-7448

General Office of the Japan Society of Tropical Ecology addressed to c/o Faculty of Agriculture, Ehime University, Tarumi, 3-5-7, Matsuyama 790, Japan. Phone (0899)41-4171 (283, 284) Fax (0899)77-4364

[Cover] *Swintonia schwenkii*, the largest tree in Pinang Pinang plot, West Sumatra (M. Hotta).



- Melittophily and Ornithophily of Long-tubed Flowers in Zingiberaceae and Gesneriaceae in West Sumatra. Makoto KATO, Takao ITINO & Teruyoshi NAGAMITSU..... 129
- Drift Fruits and Seeds on Anak Krakatau Beaches, Indonesia  
Tukirin PARTOMIHARDJO, Edi MIRMANTO, Soedarsono RISWAN & Eizi SUZUKI.....143
- Effect of the Chemical Fertilizer and Compost Application on the Biomass of *Stylosanthes guianensis* var. *guianensis* on the Barren Land After Mining in Southern Thailand. Virat TANPIBAL & Katsutoshi SAKURAI..... 157
- Trees on Farmland: Sheanut Distribution and Production in the Niger State, Nigeria. Misa MASUDA & Suleiman KUDU...169
- Extrafloral Nectar Feeding by the Japanese White-eye... Robert W. PEMBERTON & Mikio ONO.....183

第2巻 第3号  
1993年8月

# 熱帯研究

日本熱帯生態学会

## 目次

- 加藤 真, 市野隆雄, 永光輝義 西スマトラの熱帯雨林の林床に分布するショウガ科とイワタバコ科の長筒花におけるハナバチ媒と鳥媒. . . . . 129
- Tukirin PARTOMIHARDJO, Edi MIRMANTO, Soedarsono RISWAN, 鈴木英治 インドネシア, アナクラカタウ島の海岸に漂着した果実と種子. . . . . 143
- Virat TANPIBAL, 櫻井克年 南タイの鉱山跡の不毛土壌における化学肥料, 都市ゴミコンポストの施用が *Stylosanthes guianensis* var. *gianensis* のバイオマスに与える影響. . . . . 157
- 増田 美砂, Suleiman KUDU 農地における樹木の配置: ナイジェリア共和国ナイジャ州におけるシアナットの分布と生産. . . . . 169
- Robert W. PEMBERTON, 小野幹雄 メジロの花外蜜腺からの吸蜜. . . . . 183

---

編集・発行 日本熱帯生態学会編集委員会 堀田満 (編集委員長)  
鹿児島市郡元1丁目21-35 鹿児島大学理学部生物 (気付け)

Tel. 0992-85-8166 Fax 0992-85-8172

印刷 斯文堂株式会社 鹿児島市南栄3丁目1 Tel. 0992-68-8211

印刷・発行日 1993年8月16日印刷 1993年8月20日発行

# TROPICS

## 熱帯研究

Published by  
The Japan Society  
of Tropical Ecology

The TROPICS is issued quarterly with one volume a year. It is open either to the results of original research, experimental or descriptive, or significant reviews of various aspects of tropical regions. The journal publishes papers in all aspects of ecology and/or other fields of science related to ecology. It aims not only to act as a valued means of communication between Japanese ecologists and other field scientists but also to stimulate the research activities of young ecologists/scientists of tropical nations especially in Southeast Asia. All the members of the society can contribute to TROPICS, and invited articles may be accepted at the request of editorial board. Special issues may be published on occasion by permission of editorial board, as monographs or reviews exceed approximately 100 pages in length.

Editor-in-Chief: Mitsuru HOTTA (Department of Biology, Faculty of Science, Kagoshima University)

### Editorial Board

Takuya ABE (Kyoto University)  
Akio FURUKAWA (National Institute  
for Environmental Studies)  
Takashi KOHYAMA (Kyoto University)  
Narifumi MAEDA (Kyoto University)  
David W. ROUBIK (Smithsonian  
Tropical Research Institute)  
Takuo YAMAKURA\* (Osaka City University)  
Tsuyoshi YONEDA\* (Osaka Kyoiku University)

Yusho ARUGA (Tokyo University of Fisheries)  
Tamiji INOUE (Kyoto University)  
Toshitaka IWAMOTO (Miyazaki University)  
Naoki KOYAMA (Kyoto University)  
Moritaka NISHIHARA (Tohoku University)  
Eizi SUZUKI\* (Kagoshima University)  
Isamu YAMADA (Kyoto University)  
Seiki YAMANE (Kagoshima University)  
\* secretaries of editorial board

**Instructions to authors** Copy of manuscript, preferably in English (or Japanese), to be sent to the editors, typewritten on one side of paper, double-spaced, and with a wide margin. Underlinings to indicate letter types should be left to the editors. In addition to type-script copies, authors using word processing equipments are requested to submit a diskette or floppy disk with their text file. Preference is files in Microsoft Word for Macintosh, on double-sided 3.5 inch (DD, DS) diskettes. For texts processed on MS-DOS computers (preferably in Word Star or Word Perfect), please submit double-sided (DD, DS or HD) 5.25 inch or 3.5 inch floppy disks with the text saved as ASCII file.

The editors may ask the opinion of one or two reviewers before accepting or refusing the manuscript that has been submitted.

**Summary.** Each paper should be provided with a summary.

**Citation of literature.** In the text as follows: (Primack, 1991) or Ashton (1991). In the 'References' as follows:

Primack, R. B. & Hall P. 1991. Species diversity research in Bornean forests with implications for conservation biology and silviculture. *Tropics* 1: 91-111.

Jacobs, M. 1974. Botanical panorama of the Malesian archipelago. In UNESCO, *Natural Resources of Humid Tropical Asia*, 263-294. Paris.

**Drawings** in India ink, preferably not on transparent or tracing-paper, and photographs on glossy paper (white and black) or slides (color). Please indicate the place where figures should be inserted in the text. Magnification should be indicated by a scale line. In other cases the author should give the magnification as in the original.

**Reprints.** For articles with one author 50 copies free.

Manuscripts and correspondence concerning editorial matters should be addressed to **Editorial Office of the Japan Society of Tropical Ecology**, c/o Department of Biology, Faculty of Science, Kagoshima University, Korimoto 1-21-35, Kagoshima 890, Japan. Phone (0992) 85-8166 Fax 0992-85-8172

**General Office of the Japan Society of Tropical Ecology** addressed to c/o Faculty of Agriculture, Ehime University, Tarumi, 3-5-7, Matsuyama 790, Japan. Phone (0899)41-4171 (283, 284) Fax (0899)77-4364

[Cover] *Swintonia schwenkii*, the largest tree in Pinang Pinang plot, West Sumatra (M. Hotta).



## Field Studies of African Apes in Tropical Rain Forest: Methods to Increase the Scope and Accuracy of Intersite Comparisons

Edited by S. KURODA and C. E. G. TUTIN

Preface .....	187
Faecal Analysis as a Method of Describing Diets of Apes: Examples from Sympatric Gorillas and Chimpanzees at Lopé, Gabon. Caroline E. G. TUTIN & Michel FERNANDEZ. ....	189
Methods Used in the Evaluation of Lowland Gorilla Habitat in the Lopé Reserve, Gabon. Elizabeth A. WILLIAMSON. ....	199
Field Methodology for Analyzing Diets of Eastern Lowland Gorillas in Kahuzi-Biega National Park, Zaire. Juichi YAMAGIWA, Takakazu YUMOTO, Tamaki MARUHASHI & Ndunda MWANZA. ...	209
Approaches in Density Estimates and Recon-struction of Social Groups of a Western Lowland Gorilla Population in the Ndoki Forest, Northern Congo. Masazumi MITANI, Juichi YAMAGIWA, Rufin Antoine OKO, Jean-Marie MOUTSAMBOTÉ, Takakazu YUMOTO & Tamaki MARUHASHI. ....	219
Measuring Chimpanzee Food Abundance. Richard K. MALENKY, Richard WRANGHAM, Colin A. CHAPMAN & Evelyn Ono VINEBERG. ....	231
Nesting Behavior of Lowland Gorillas in the Dzanga-Sangha Reserve, Central African Republic: Implications for Population Estimates and Understandings of Group Dynamics. Melissa J. REMIS. ....	245

第2巻 第4号  
1993年11月

# 熱帯研究

日本熱帯生態学会

## 目次

アフリカの熱帯雨林に生息する類人猿の野外研究：生息地間比較の発展を  
求めて

黒田末寿・C. E. G. TUTIN 編集

- C. G. TUTIN, M. FERNANDEZ 類人猿の食物の記述法としての糞分析：ガボン、ロベ保護  
区の同所的ゴリラとチンパンジーでの例.....189
- E. A. WILLIAMSON ガボン、ロベ保護区のゴリラ生息地の環境評価に用いた方法..... 199
- 山極寿一, 湯本貴和, 丸橋珠樹, N. MWANZA ザイール, カフジーピエガ国立公園に生息するヒ  
ガシローランドゴリラの食性研究の野外方法..... 209
- 三谷雅純, 山極寿一, R. A. OKO, Jean-Marie MOUTSAMBOITE, 湯本貴和, 丸橋珠樹 コンゴ北  
部のンドキ森林のニシローランドゴリラ集団の集団社会構造と密度の推定..... 219
- R. K. MALENKY, R. WRAMGHAM, C. A. CHAPMAN, E. O. VINEBERG チンパンジーの食物量の測定  
..... 231
- M. J. REMIS 中央アフリカ共和国のザンガーサンガ保護区に生息するローランドゴリラの営巣行  
動：その個体数推定と集団動態に対する意味..... 245

編集・発行 日本熱帯生態学会編集委員会 堀田満 (編集委員長)  
鹿児島市郡元1丁目21-35 鹿児島大学理学部生物 (気付け)

Tel. 0992-85-8166 Fax 0992-85-8172

印刷 斯文堂株式会社 鹿児島市南栄3丁目1 Tel. 0992-68-8211

印刷・発行日 1993年11月26日印刷 1993年11月30日発行

# TROPICS

## 熱帯研究

Published by  
The Japan Society  
of Tropical Ecology

The TROPICS is issued quarterly with one volume a year. It is open either to the results of original research, experimental or descriptive, or significant reviews of various aspects of tropical regions. The journal publishes papers in all aspects of ecology and/or other fields of science related to ecology. It aims not only to act as a valued means of communication between Japanese ecologists and other field scientists but also to stimulate the research activities of young ecologists/scientists of tropical nations especially in Southeast Asia. All the members of the society can contribute to TROPICS, and invited articles may be accepted at the request of editorial board. Special issues may be published on occasion by permission of editorial board, as monographs or reviews exceed approximately 100 pages in length.

Editor-in-Chief: Mitsuru HOTTA (Department of Biology, Faculty of Science, Kagoshima University)

### Editorial Board

Takuya ABE (Kyoto University)	Yusho ARUGA (Tokyo University of Fisheries)
Akio FURUKAWA (National Institute for Environmental Studies)	Tamiji INOUE (Kyoto University)
Takashi KOHYAMA (Kyoto University)	Toshitaka IWAMOTO (Miyazaki University)
Narifumi MAEDA (Kyoto University)	Naoki KOYAMA (Kyoto University)
David W. ROUBIK (Smithsonian Tropical Research Institute)	Moritaka NISHIHARA (Tohoku University)
Takuo YAMAKURA* (Osaka City University)	Eizi SUZUKI* (Kagoshima University)
Tsuyoshi YONEDA* (Osaka Kyoiku University)	Isamu YAMADA (Kyoto University)
	Seiki YAMANE (Kagoshima University)
	* secretaries of editorial board

**Instructions to authors** Copy of manuscript, preferably in English (or Japanese), to be sent to the editors, typewritten on one side of paper, double-spaced, and with a wide margin. Underlinings to indicate letter types should be left to the editors. In addition to type-script copies, authors using word processing equipments are requested to submit a diskette or floppy disk with their text file. Preference is files in Microsoft Word for Macintosh, on double-sided 3.5 inch (DD, DS) diskettes. For texts processed on MS-DOS computers (preferably in Word Star or Word Perfect), please submit double-sided (DD, DS or HD) 5.25 inch or 3.5 inch floppy disks with the text saved as ASCII file.

The editors may ask the opinion of one or two reviewers before accepting or refusing the manuscript that has been submitted.

**Summary.** Each paper should be provided with a summary.

**Citation of literature.** In the text as follows: (Primack, 1991) or Ashton (1991). In the 'References' as follows:

Primack, R. B. & Hall P. 1991. Species diversity research in Bornean forests with implications for conservation biology and silviculture. *Tropics* 1: 91-111.

Jacobs, M. 1974. Botanical panorama of the Malesian archipelago. In UNESCO, *Natural Resources of Humid Tropical Asia*, 263-294. Paris.

**Drawings** in India ink, preferably not on transparent or tracing-paper, and photographs on glossy paper (white and black) or slides (color). Please indicate the place where figures should be inserted in the text. Magnification should be indicated by a scale line. In other cases the author should give the magnification as in the original.

**Reprints.** For articles with one author 50 copies free.

Manuscripts and correspondence concerning editorial matters should be addressed to **Editorial Office of the Japan Society of Tropical Ecology**, c/o Department of Biology, Faculty of Science, Kagoshima University, Korimoto 1-21-35, Kagoshima 890, Japan. Phone (0992) 85-8166 Fax 0992-85-8172

**General Office of the Japan Society of Tropical Ecology** addressed to c/o Faculty of Agriculture, Ehime University, Tarumi, 3-5-7, Matsuyama 790, Japan. Phone (0899)41-4171 (283, 284) Fax (0899)77-4364

[Cover] *Swintonia schwenkii*, the largest tree in Pinang Pinang plot, West Sumatra (M. Hotta).